

Gehäuse BOPLA ET-233
eventuell mit Klarsichtdeckel

Wohnraumuhr1_Rev1.1

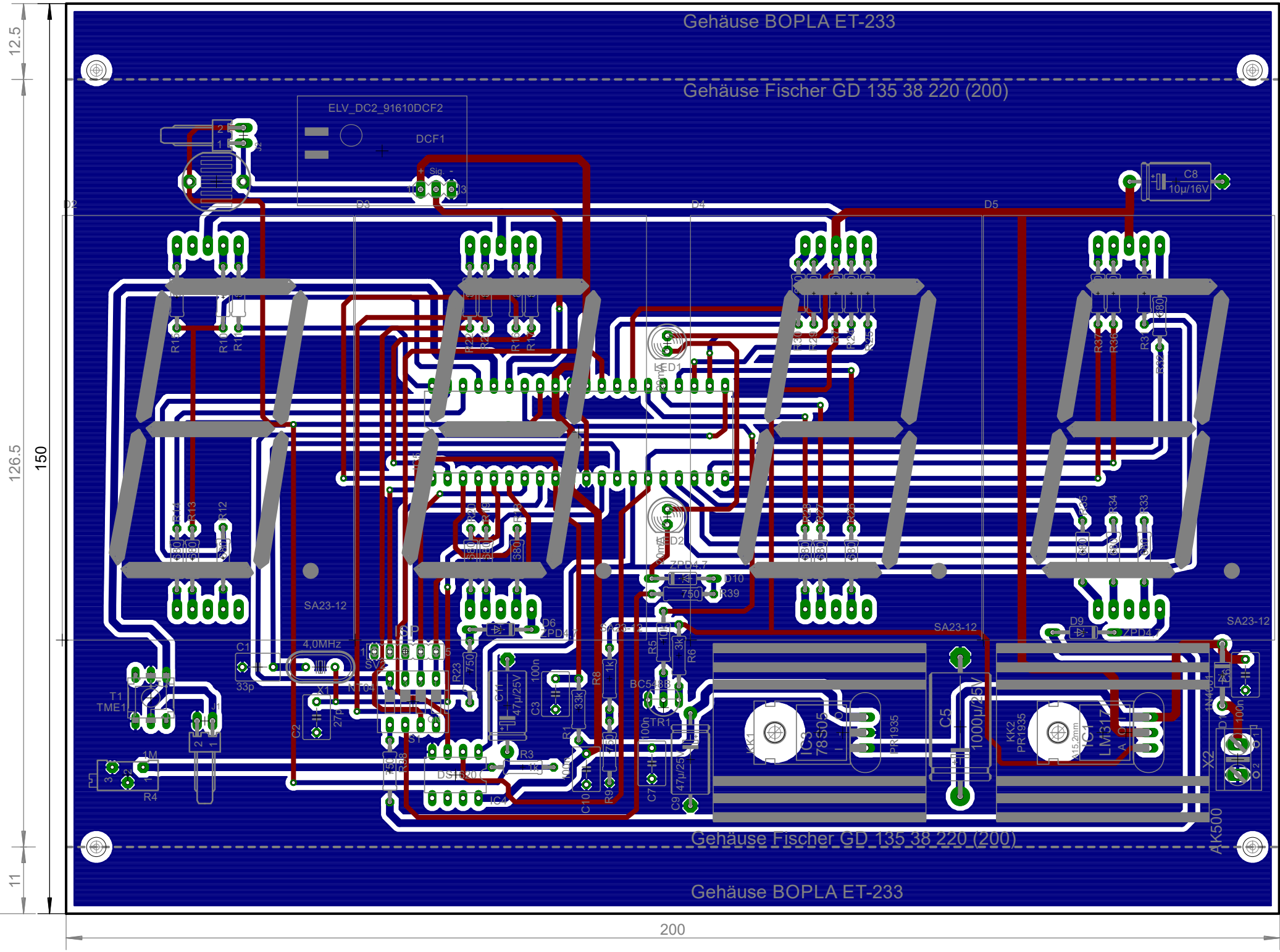
26.05.2020 10:20:01

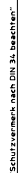
Sheet: 1/1

Gehäuse Fischer GD 135 38 220 (200)

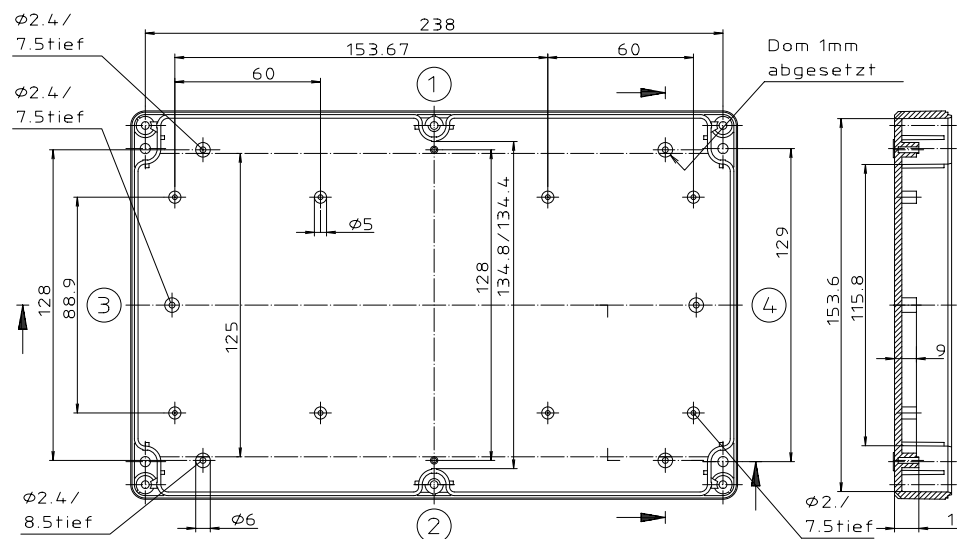
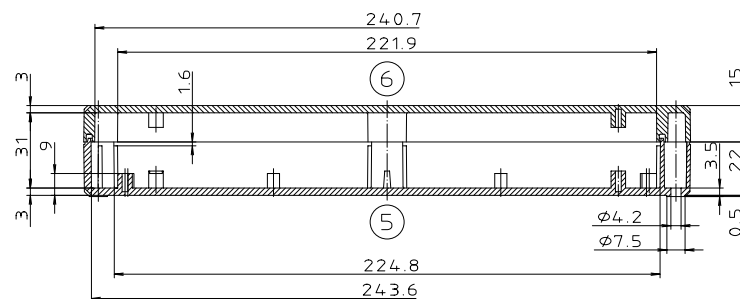
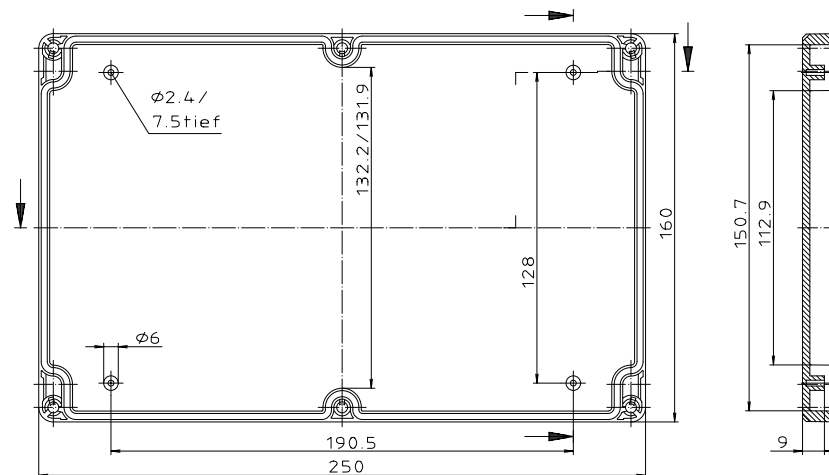
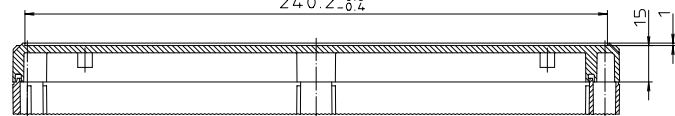


Gehäuse BOPLA ET-233





Technical drawing of a rectangular frame. The drawing shows a rectangle with a double-line border. The height is dimensioned on the right side as 132.2 ± 0.5 mm. The drawing includes dashed lines for the center lines of the rectangle and the border. There are small circles at the corners, likely representing fasteners or mounting points.

$$240.2^{+0.8}_{-0.4}$$


Maßstab: 1:1		
Zchn.Nr: 1K 5145.150.02		
Artikel: EM/ET 233 EM/ET 233 F Katalogzeichnung		
		 BOP A Piazza Piazze Com
3639	22.08.2002	
Ae.Nr:	Datum:	DISK : 2 501 708 Datum: 24.03.99 AK



- vielfältig einsetzbares Gehäuse mit integrierten Führungsnuten zur Aufnahme von ungenormten Bauteilen oder Leiterplatten
- einschiebbares Deckblech in unterschiedlichen Blechstärken: 1,5/2 mm (**GB 81 - 83**); 2/2,5 mm (**GB 84**)
- Integrationsmöglichkeit von Frontfolien oder Folientastaturen
- spezielle Abmessungen, Bearbeitungen und Oberflächen nach Ihren Vorgaben möglich

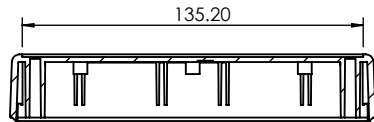
Art. Nr.	
GD 82 34 ...	
Art. Nr.	
GD 105 44 ...	
Art. Nr.	
GD 135 38 ...	
Art. Nr.	
GD 165 59 ...	
bitte angeben:	<div> <div> ... 100 120 160 200 220 234 mm </div> <div> ... Oberfläche SA = schwarz eloxiert ME = naturfarbig eloxiert </div> </div>

Profil als Meterware → M 10

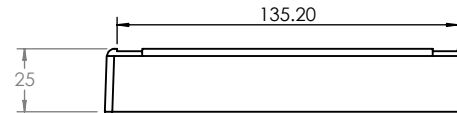
OVERALL ASSEMBLY DIMENSIONS:

EXTERNAL - 220 x 145 x 50

INTERNAL - 215 x 140 x 43.5



SECTION B-B

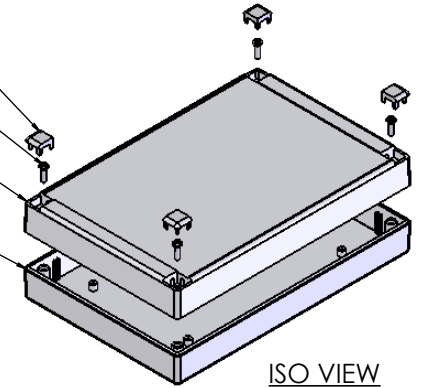


CORNER/SCREW CAP

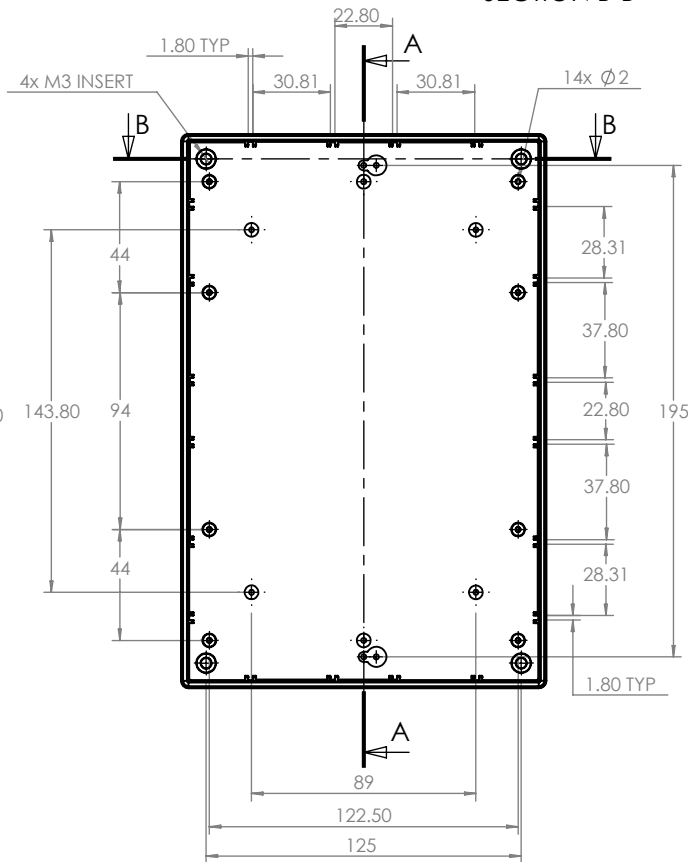
M3 SCREW

LID

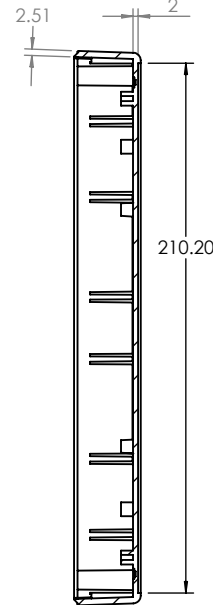
BASE



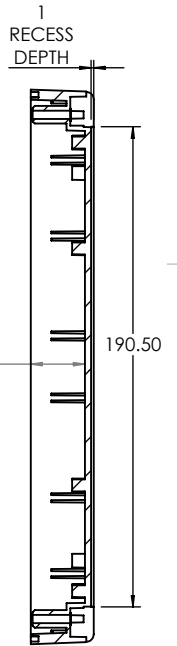
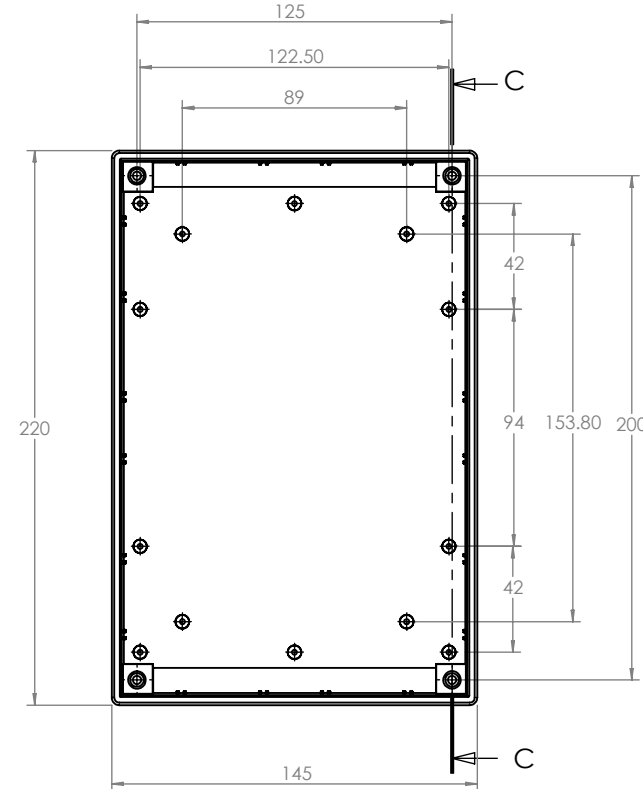
ISO VIEW
1:5



BASE



SECTION A-A



SECTION C-C

LID



RND
components

UNLESS OTHERWISE SPECIFIED:
DIMENSIONS ARE IN MILLIMETERS

GENERAL TOLERANCES +/- 0.2

FINISH.
LIGHT SPARK

MATERIAL.
UL - 94 HB ABS

PROJECTION.

DO NOT SCALE DRAWING

REVISION. A

TITLE:
7000 SERIES DESIGNER CASES SIZE
8

DWG NO. RND 455-00008

A4

SCALE. 1:3

SHEET 1 OF 1

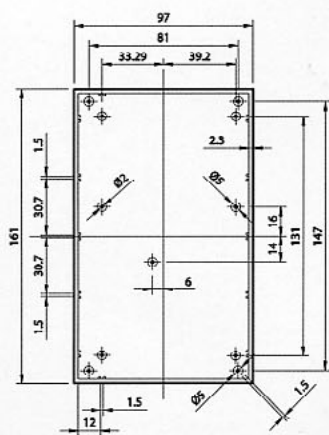
DRAWN	NAME	SIGNED	DATE
CHK'D	IAN PAGANO	I.P.	24/09/13
	-	-	-



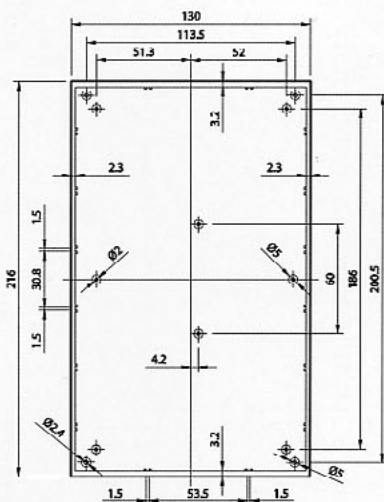
AUSFÜHRUNG

Kunststoffgehäuse mit um 15° geneigte Aluminiumplatte. Unterteil mit integrierten Führungen und Montagepeilern für PCB. Glänzende Oberfläche. Montage mit 4 oder 6 Schrauben.

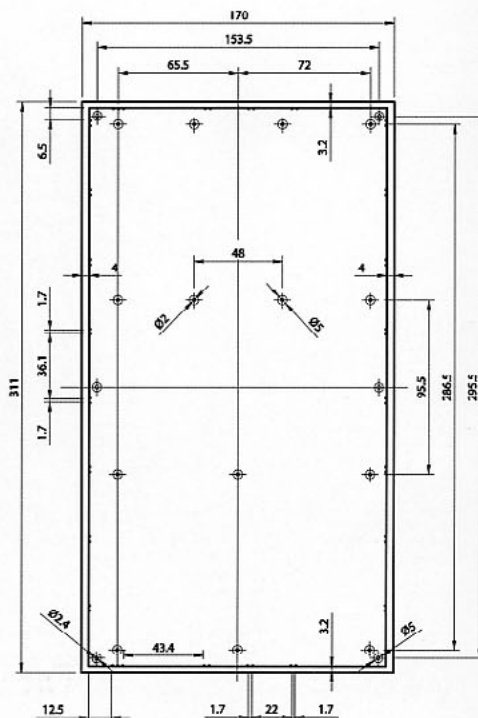
FARBEN: .8 (Dunkelgrau)



Mod. 362



Mod. 363



Mod. 364

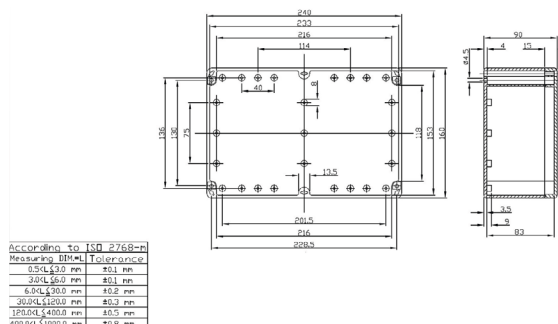
MODELL	ABMESSUNGEN mm		
	L	B	H
362.8	161.0	97.0	61.1
363.8	216.0	130.0	77.7
364.8	311.0	170.0	89.0

[illegible][illegible]

Plastic Enclosures



Plastic enclosure light grey IP 65



According to ISO 2768-m	
Measuring item	Tolerance
0.5L 120 mm	±0.1 mm
0.5L 160 mm	±0.1 mm
0.5L 200 mm	±0.2 mm
0.5L 240 mm	±0.2 mm
0.5L 300 mm	±0.3 mm
0.5L 400 mm	±0.5 mm
0.5L 500 mm	±0.8 mm

FEATURES:

The lid is fixed with non mag stainless steel M4 screws and brass thread bushes in the base

The lid is provided with a slightly sunk area for the membrane keyboard.

The holes in the enclosures for wall mounting and lid fixing screws are located outside the sealing area to protect against moisture and dust.

SPECIFICATION:

Colour	light grey
Protection rating	IP 65
Mounting	Screws
Front panel	Transparent

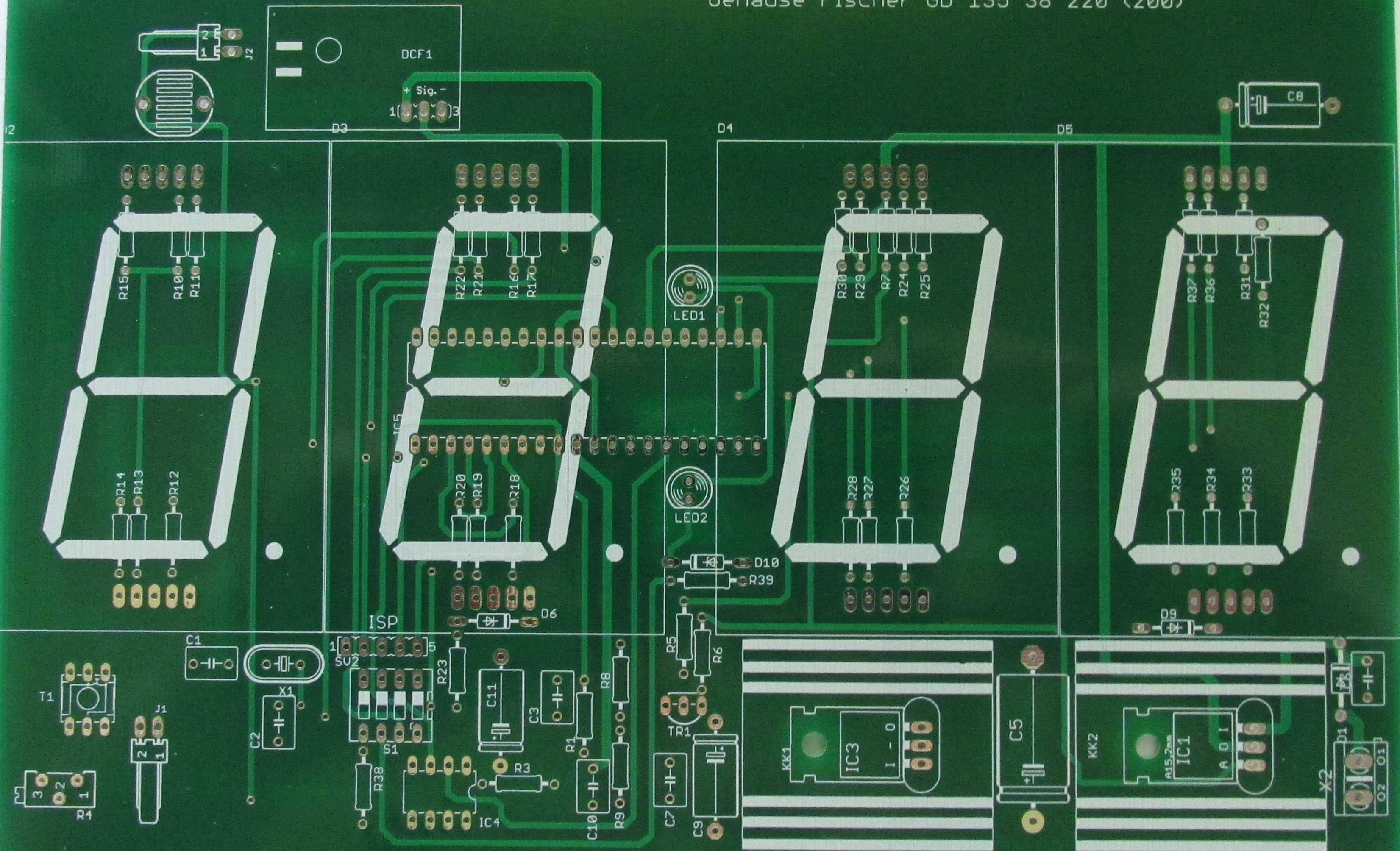
PRODUCT RANGE:

Art. Nr.	Dimensions L x W x H	Temperature range
RND 455-00201	240 x 160 x 90 mm	-40...+120 °C
RND 455-00181	64 x 58 x 35 mm	-40...+120 °C
RND 455-00202	240 x 160 x 120 mm	-40...+120 °C
RND 455-00203	300 x 230 x 86 mm	-40...+120 °C
RND 455-00204	300 x 230 x 111 mm	-40...+120 °C
RND 455-00182	115 x 65 x 40 mm	-40...+120 °C
RND 455-00205	360 x 200 x 150 mm	-40...+120 °C
RND 455-00183	115 x 65 x 55 mm	-40...+120 °C
RND 455-00184	115 x 90 x 55 mm	-40...+120 °C
RND 455-00185	171 x 121 x 55 mm	-40...+120 °C
RND 455-00186	222 x 146 x 55 mm	-40...+120 °C
RND 455-00187	115 x 90 x 80 mm	-40...+120 °C
RND 455-00188	171 x 121 x 80 mm	-40...+120 °C
RND 455-00189	195 x 80 x 55 mm	-40...+120 °C
RND 455-00190	222 x 146 x 75 mm	-40...+120 °C
RND 455-00191	265 x 185 x 95 mm	-40...+120 °C
RND 455-00192	52 x 50 x 35 mm	-40...+120 °C
RND 455-00193	82 x 80 x 55 mm	-40...+120 °C
RND 455-00194	160 x 80 x 55 mm	-40...+120 °C
RND 455-00195	160 x 80 x 85 mm	-40...+120 °C
RND 455-00196	200 x 120 x 75 mm	-40...+120 °C
RND 455-00197	120 x 120 x 60 mm	-40...+120 °C
RND 455-00198	120 x 120 x 90 mm	-40...+120 °C
RND 455-00199	160 x 160 x 60 mm	-40...+120 °C
RND 455-00200	160 x 160 x 90 mm	-40...+120 °C
RND 455-00133	100 x 100 x 55 mm	-40...+120 °C

Art. Nr.	Dimensions L x W x H	Temperature range
RND 455-00134	100 x 100 x 90 mm	
RND 455-00135	120 x 80 x 55 mm	
RND 455-00136	120 x 80 x 85 mm	
RND 455-00137	200 x 120 x 90 mm	
RND 455-00138	240 x 120 x 60 mm	
RND 455-00139	240 x 120 x 100 mm	
RND 455-00140	200 x 150 x 55 mm	
RND 455-00141	200 x 150 x 75 mm	
RND 455-00142	353 x 140 x 121.5 mm	
RND 455-00143	190 x 190 x 55 mm	

Gehäuse BOPLA ET-233
Gehäuse RND 455-00186

Gehäuse Fischer GD 135 38 220 (200)



Gehäuse Fischer GD 135 38 220 (200)

Gehäuse RND 455-00186
Gehäuse BOPLA ET-233

